



Introduction to the Coordinated Assessments Partnership

Jen Bayer (USGS/PNAMP)

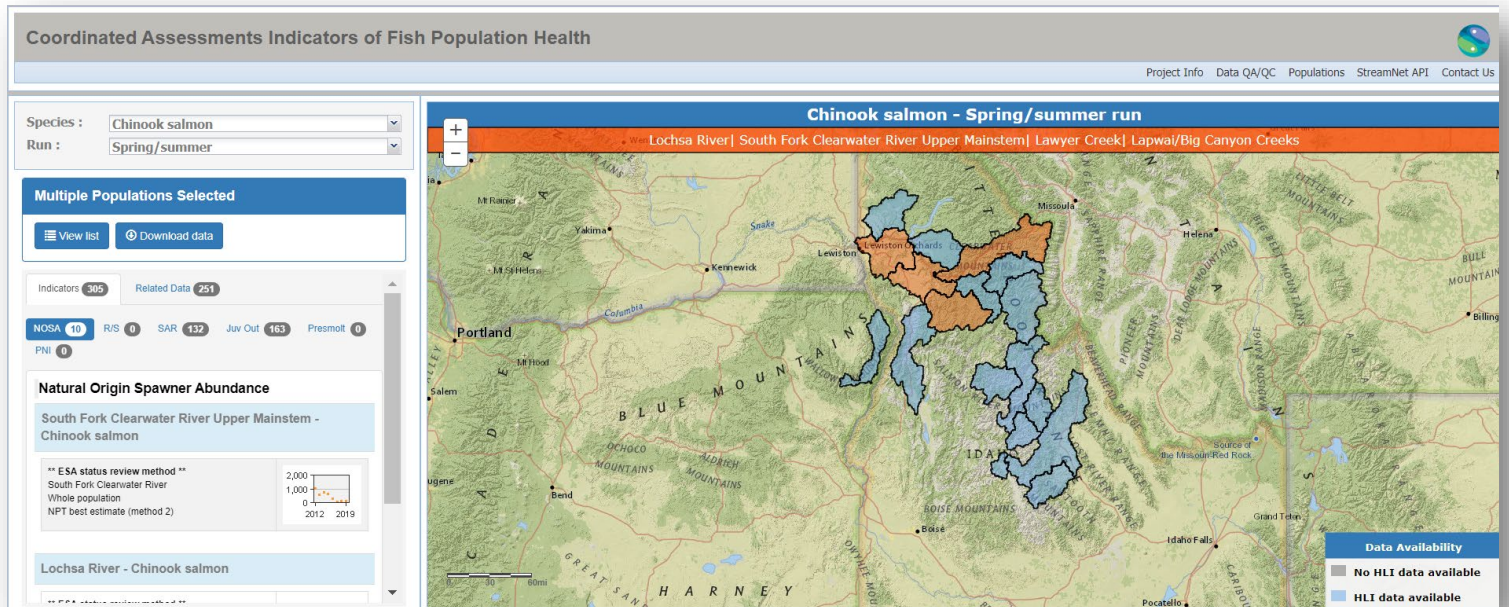
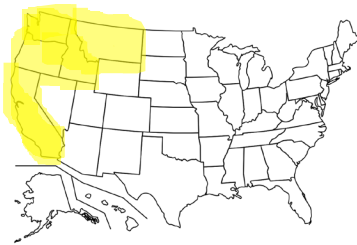
&

Nancy Leonard (PSMFC/StreamNet)



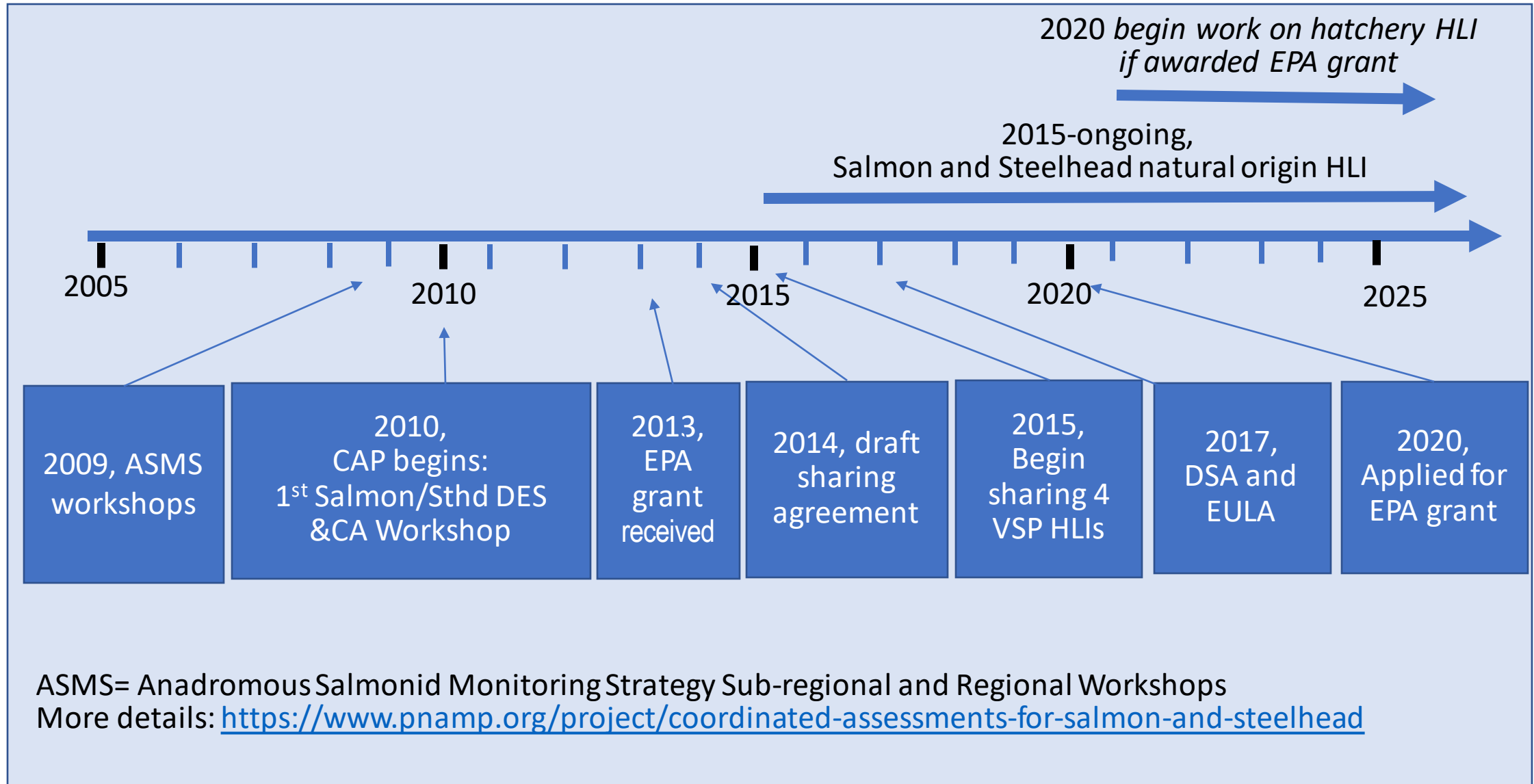
What is the Coordinated Assessments Partnership (CAP)

- Collaborative process to provide access to standardized indicators Pacific Northwest/West Coast fish data to inform regional assessments and policy/decision-makers such as ESA.
- Collaborative effort funded by: BPA, EPA Exchange Network Grants, NOAA-F, states and tribes.
- Co-sponsored: PNAMP and StreamNet

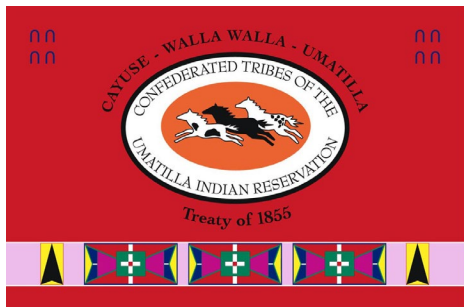
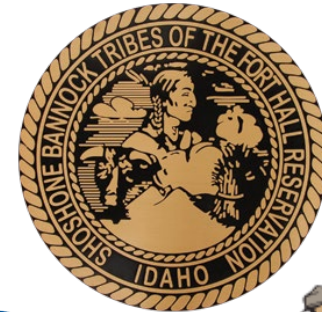
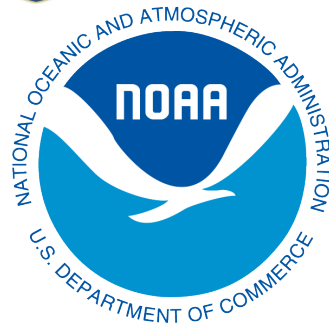


Evolution of the CAP

some highlights



CAP Partners and Participants



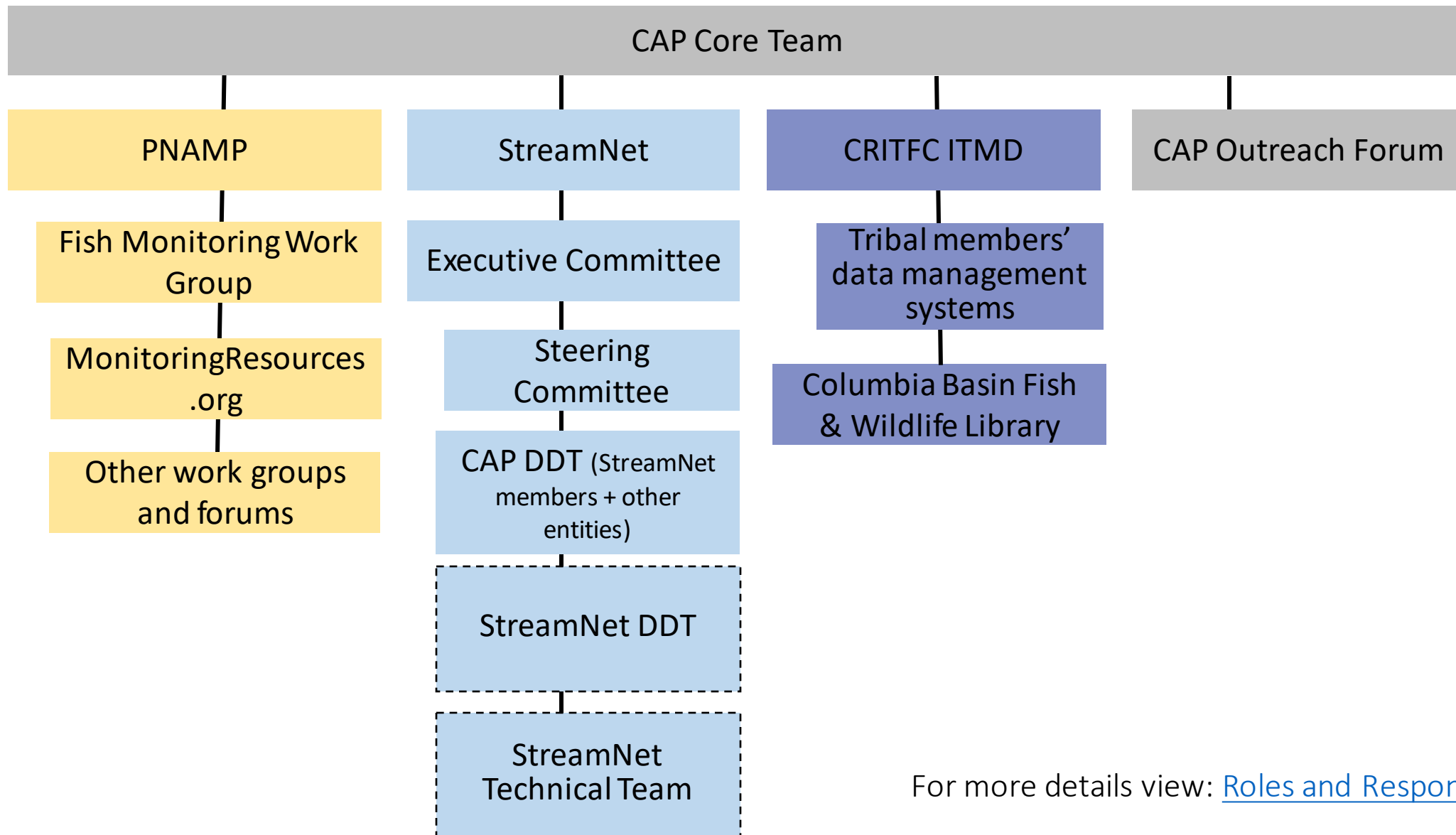
CAP Leadership & Participation

- **Co-sponsored:** PNAMP and StreamNet
- **Entities:** tribes, states, federal, tribal consortium, interstate entities and regional programs/partnership
- **Participants:** fluid depending on task and group, includes fisheries biologist and data stewards:

BPA Colville Tribes CRITFC Columbia Basin F&W Library Fish Passage Center	IDFG MFWP NPT NOAA-F ODFW PNAMP	PSMFC (StreamNet) staff StreamNet SC representative USFWS WDFW Others as needed
--	--	---

- **Supported by**
 - funding from BPA and occasional grants from the EPA and NOAA IJFA
 - significant in-kind contributions federal, state, and tribal fish managers.

Structure and Relationships



For more details view: [Roles and Responsibilities Document](#)

Sharing Expertise to Provide Quality Data Managed by Data Stewards

to efficiently provide quality data in support of regional assessments and reporting

CRITFC ITMD
CBF&W Library
PNAMP
StreamNet

StreamNet Program, CRITFC ITMD, CBF&W Library, and PNAMP Connecting Expertise for Successful Data Collection, Management, and Sharing

FW Manager expertise to identify best data and indicators to share

Documentation of data details (metadata) for proper use of data

Data Sharing Capacity is built and maintained within FW agencies and tribes

Data Managers and Stewards develop efficient data sharing approach

Data access tools and support public understanding and wise decision making

Public access to documents and reports that contain contextual supporting information for data

CAP - Current HLI and Activities of Key Interest

- Natural Origin Salmon and Steelhead HLI
 - Adult spawner abundance (NOSA), Adult escapement, Presmolt abundance, Juvenile Outmigrants, Smolt to Adult Return Rate (SAR), Recruits per Spawner (R/S) , Proportionate Natural Influence (PNI)
- Hatchery Origin Salmon and Steelhead HLI
- Upcoming Data Categories (pending funding and regional priorities)
 - bull trout, white sturgeon, carrying capacity, other fish (e.g., lamprey, trout, burbot, kokanee)

More information: [Five-Year Plan for Coordinated Assessments Partnership \(Adopted September 2, 2020\)](#)

New Data Category *in prep*: Hatchery Indicators “HCAX”

- **Project goal:** provide access to Pacific Northwest EPA Region 10 salmonid hatchery information for regional decision-making through the Hatchery Coordinated Assessments Exchange (Pacific Northwest HCAX)
- **EPA Exchange Network 2020-2023 Proposal leads:** WA GSRO/RCO, WDFW, PSMFC-StreamNet, USGS-PNAMP, Colville Tribes
- **Project Implementation:**

	End Month/Year	2020			2021					2022					2023													
		Oct	Nov	Dec	Jan	Feb	Mar	Apr	May	Jun	Jul	Aug	Sep	Oct	Nov	Dec	Jan	Feb	Mar	Apr	May	Jun	Jul	Aug	Sep	Oct	Nov	Dec
Goal 1. Organize HCAX project governance	1.1 WA GSRO/RCO set up agreements with subawardees																											
	1.2 QARF																											
	1.3 WA GSRO/RCO interim and final reports						X				X				X					X								F
	1.4 PSMFC subcontract IDFG/ODFW																											
Goal 2: Confirm relationship with new partners	2.1 Confirm new partners																											
	2.2 Coordination and facilitation services for work sessions						S	E		W	C	C	C	S	E	C	W	C	C	C	S	C	E	C	W			
	2.3 Update DSA, EULA, and Data Use Policy document																											
	2.4 Support key workshops (non-EPA awardees)																											
Goal 3 Collaborative development DES, templates, and schema	3.1 Agree on standardized hatchery HLIs																											
	3.2 Develop new DES																											
	3.3 Advance capacity																											
	3.4 Document metadata																											
	3.5 Draft XML schema																											
	3.6 Conduct a pilot test																											
Goal 4 Review and finalize XML schema and publish design	4.1 Submit draft XLM schema																											
	4.2 Finalize XML																											
	4.3 Establish exchange																											
Goal 5 Disseminate results and transfer technology	5.1 Communicate results																											

Legend

- S StreamNet Steering Committee
- E StreamNet Executive Committee
- W Workshop
- C Workgroup conference calls
- X EPA interim report
- F EPA final report

HCAX Goals

- Identify and share key salmon and steelhead hatchery indicators to:
- advance sharing of standardized metrics and HLIs for hatchery salmon and steelhead in a well-defined, transparent manner across the Pacific Northwest
- improve consistency in the information communicated with the public, and used for environmental reporting required for regional decision-making in multiple forums
- contribute to reporting on salmon and steelhead for states, tribes, tribal consortia, federal agencies and other partners



HCAX Project Participants

- BPA
- Chelan PUD
- Confederated Tribes of the Colville Reservation*
- Confederated Tribes of the Umatilla Indian Reservation
- CRITFC
- Idaho Power
- IDFG
- NOAA
- NPCC
- ODFW
- PSMFC/RMIS
- PSMFC/StreamNet*
- Shoshone-Bannock Tribes
- USFWS
- USGS/PNAMP*
- WA Governors Salmon Recovery Office*
- WDFW*
- Yakama Nation Fisheries

* Indicates EPA Grant Partners

More Information

- StreamNet <https://www.streamnet.org/>
- CAP: <https://www.streamnet.org/data/coordinated-assessments/>

- Accessing CAX data

- CAX Resources documentation page

<https://www.streamnet.org/coordinated-assessments-xct-development/>

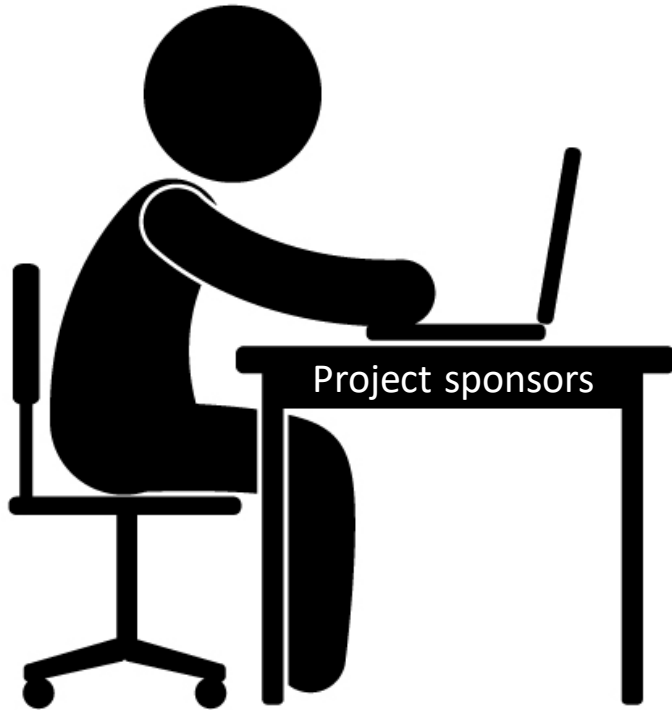
- CA population boundaries map/ArcGIS REST Services

<https://maps.psmfc.org/server/rest/services/StreamNet/CoordinatedAssessments/MapServer>

- PNAMP CAP project page <https://www.pnamp.org/project/coordinated-assessments-for-salmon-and-steelhead>

Working Together

to secure investments, reduce redundancies, and meet FAIR principles



Pisces Web at CBFish.org

- proposals
- contracts/SOW
- annual reports



MonitoringResources.org

- study plans
- sample designs
- protocols
- methods



StreamNet

- local trends
- CAX
- archived data



CBF&W Library

- reports
- gray literature
- books
- access to peer journals



Information exchange

Contact Us

Nancy Leonard, Program Manager, PSMFC

nleonard@psmfc.org

Jen Bayer, PNAMP Coordinator, USGS

jbayer@usgs.gov



StreamNet

Fish Data for the Pacific Northwest



pacific northwest aquatic
monitoring partnership

