

[View this email in your browser](#)



pacific northwest aquatic
monitoring partnership

Events

March

- Mar 5:** [Leave it to Beaver? Beaver-Based Considerations for Restoration Workshop \(Oregon City, OR\)](#)
- Mar 10-11:** [Washington Salmon Recovery Funding Board \(Olympia, WA\)](#)
- Mar 10-12:** [Northwest Power and Conservation Council Meeting \(Portland, OR\)](#)
- Mar 12:** [Low-Tech Approaches for Salmon Habitat Restoration Workshop \(virtual\)](#)
- Mar 18:** [PTAGIS Steering Committee Annual Meeting \(Portland, OR\)](#)
- Mar 19:** [Washington Invasive Species Council Meeting \(Olympia, WA\)](#)
- Mar 23:** [96th Annual Conference of the Northwest Scientific Association \(Olympia, WA\)](#)
- Mar 28:** [Long Live the Kings – Spring Splash 2026 \(Seattle, WA\)](#)

April

- Apr 6:** [AFS Washington – British Columbia Chapter 2026 Annual Meeting \(Wenatchee, WA\)](#)
- Apr 6:** [Wetland Delineation Workshop – April 2026 \(Milwaukie, OR\)](#)
- Apr 14:** [Northwest Power and Conservation Council Meeting Whitefish, MT\)](#)
- Apr 16:** [PNAMP Fish Monitoring Work Group \(virtual\)](#)
- Apr 21:** [2026 Columbia Gorge Fisheries and Watershed Science Symposium \(The Dalles, OR\)](#)
- Apr 23-24:** [Indigenizing Restoration Workshop \(Oregon City, OR\)](#)

If you have an upcoming event that you would like to add to the PNAMP website and newsletter, please reach out to mdethloff@psmf.org.

Job Openings

[Multiple Seasonal Positions](#) - Pacific States Marine Fisheries Commission (OR, CA, WA) - Closes:
March 6, 2026

[Senior Manager, Corporate and Committee Engagement](#) - Marine Technology Society (remote) - Closes: March 6, 2026

[Data Management Specialist 2-Data, Information and Process Support](#) - Pacific States Marine Fisheries Commission (Portland, OR) - Closes: March 16, 2026

[Technician II](#) - Spheros Environmental (Hood River, OR) - Closes: Open until Filled

If you have a job opening that you would like to add to the PNAMP website and newsletter, please reach out to mdethloff@psmfc.org.

Announcements & Recent Publications

PNAMP seeks your feedback for our Strategic Plan



Filling out this survey is one of the most impactful ways you can shape the direction of our partnership over the next five years. Your insights will help identify shared priorities, highlight emerging needs, and ensure that our strategic plan reflects the real challenges and opportunities experienced across our community. By taking a few minutes to share your perspective, you're directly influencing how we invest our time, resources, and collaboration efforts to better support the work we all do. **Your voice matters—please take the survey today and help us chart a strong, collaborative path forward.**

Survey closes: March 31, 2026

Questions or comments? Please reach out to Meg Dethloff (mdethloff@psmfc.org) and Nancy Leonard (nleonard@psmfc.org).

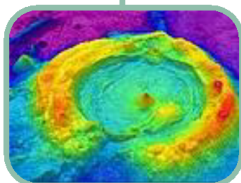
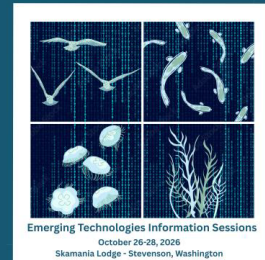
Fill out the survey

Emerging Technologies Information Sessions Invitation - Coming Soon!

PNAMP and StreamNet invite you to the

2026 Emerging Technologies Information Sessions

Insight Below the Surface: Advancing Ecological Monitoring Through Innovative Tools and Data Driven Decisions



Are you a monitoring professional, project manager, field data collector, or data manager? Do you want to streamline your data collection process with unmanned aircraft systems, handheld mobile reporting, or innovative remote sensing tools? Do you want to learn about the latest and greatest applications of AI, Machine Learning, ArcGIS, Tableau, Python, or R for ecological monitoring data? Do you want to share how you have improved your work with technology or novel techniques?

You're in luck! Join us for the 2026 Emerging Technologies Information Sessions (ETIS) and learn about innovative technologies and techniques in monitoring for data collection, data management, and data visualization. Network with other monitoring professionals implementing technologies in new ways.

When: October 26th, 2026, 12:00 pm – October 28th, 2026, 12:00 pm
(½ day, full day, ½ day)

Where: Skamania Lodge, 1131 Skamania Lodge Dr, Stevenson, WA 98648

*Should the in-person nature of the 2026 ETIS pose concerns for you to present or attend, please contact us at pnamp@psmfc.org.

Travel: Stevenson, Washington is located in the Columbia River Gorge approximately an hour east of the nearest major airport in Portland, OR.

Lodging: Rooms at the GSA Rate of \$155/night plus taxes and fees. There will be a room block at Skamania Lodge for this event, and it is **first come/first serve**. When the room block is full no other discounted rooms are available.

Reservations for the room block can be made [HERE](#) or by calling 844-432-4748.

Registration Fee: Registration for this event will be set at \$175 and will include poster and exhibitor session appetizers on Oct 27th, continental breakfast on Oct 27th and 28th, lunch on Oct 27th, and coffee and snack breaks throughout.



*Want to share your work? Look for a call for
abstracts in mid-March 2026*

*Interested in being an exhibitor or sponsor?
Contact Nancy Leonard: nleonard@psmfc.org*

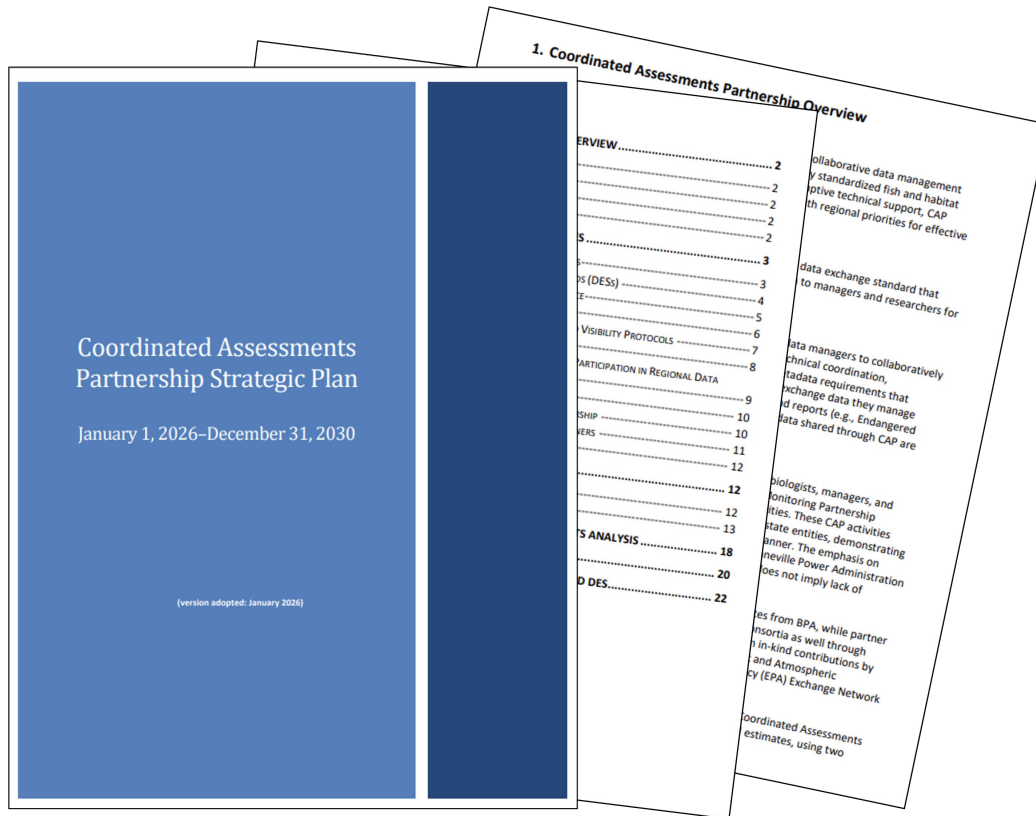


All photos by Unknown Authors are licensed under [CC BY-SA](https://creativecommons.org/licenses/by-sa/4.0/)

Interested in more information and would like to be added to the distribution list? Reach out to Sam Cimino, scimino@psmfc.org.

The Coordinated Assessments Partnership (CAP) is pleased to

announce the finalization of the 2026–2030 CAP Strategic Plan



Adopted in January 2026, the [Coordinated Assessments Partnership Strategic Plan](#) strengthens regional collaboration across tribal, state, and federal partners to support consistent, high-quality fish and habitat data for the Pacific Northwest. The updated plan outlines 11 strategic goals focused on modernizing data systems, maintaining and refining Data Exchange Standards, improving interoperability across platforms, and advancing FAIR/CARE data principles. It also elevates tribal engagement, sustainable knowledge sharing, and transparent coordination among partners.

The Strategic Plan reflects more than a decade of collaborative progress and sets a clear path for continued innovation, data stewardship, and shared governance. CAP looks forward to working with partners to implement these priorities and continue delivering reliable, standardized information that supports science-based decision-making throughout the region.

Reach out to Mari Williams, mwilliams@psmfc.org, for more information.

Recent Publications:

[Plant diversity and complexity often lag behind other measures of long-term vegetation development in restored US Pacific coast tidal marshes](#)

Christopher Janousek, Trevor Williams, Jennifer Kirkland, Kerstin Wasson, Jenni Schmitt, Laura Brophy, Jeff Crooks

The following publications are part of the Salmon Science on the Street email sent out by Greer Maier, science coordinator for the Washington State Governor's Salmon Recovery Office. If you'd like to recommend a paper or want included on the Salmon Science on the Street distribution list, reach out to Greer at, greer.maier@gsro.wa.gov.

[Salmon watershed archetypes: A clustering of cumulative pressures and climate change](#)

Spencer Dakin Kuiper, Jonathan W. Moore, Riley J. R. Finn, Nigel C. Sainsbury, Diane C. Whited, Tara G. Martin

[Assessing cumulative effects to support Indigenous-led ecosystem-based management in salmon watersheds](#)

Riley J.R. Finn, Megan S. Adams, Vivitskaia J. Tulloch, Christina Service, Jason Moody, Jason Slade, Stephanie Avery-Gomm, Mathieu L. Bourbonnais, Briony Penn, and Tara G. Martin

[Adaptive monitoring and partnerships in river restoration: insights from the Middle Fork John Day River Intensively Monitored Watershed, Oregon](#)

Kasey L. Bliesner, Lauren J. Osborne, Melody J. Feden, Ian A. Tattam, Ken E. Fetcho, Chris E. Jordan

[Mapping global freshwater ecosystems to guide national restoration targets and nature-based solutions](#)

Mahya G. Z. Hashemi, Kashif Shaad, Vivian Griffey, Ibrahim Nourein Mohammed, Maíra Ometto Bezerra, Starry Sprenkle-Hyppolite & John D. Bolten

[The role of hatchery origin in early marine residence and survival of Interior Columbia River spring and summer Chinook salmon \(*Oncorhynchus tshawytscha*\)](#)

Rebecca M. Forney forneyr@oregonstate.edu, Amy A. Wallace, Brian J Burke, Cheryl A. Morgan, and Jessica A. Miller

[Quantifying Pathogen eDNA at a Trap-and-Haul Facility for Adult Chinook Salmon \(*Oncorhynchus tshawytscha*\)](#)

Katherine C. Carey, Michael L. Kent, Lauren Norris, Justin L. Sanders, Carl B. Schreck, Claire E. Couch, Corbin J. Schuster, James T. Peterson

[Life history diversity of Hoh River winter steelhead based on three decades of scale analysis](#)

Andrew M Claiborne, Austin J Anderson, Jan Ohlberger, James P Losee, Brian Hoffman, Jennifer Whitney

[Place of Salmon?: Examining Salmon, Sense of Place, and Placemaking in Puget Sound](#)

David J. Trimbach & Rebecca Niggemann

[From habitat heterogeneity to flood refugia: linking flow intensity and morphology to inform river management](#)

Chantal Mariette Hischer, Nico Bätz, Cristina Rachely, Paul Demuth, Volker Weitbrecht, David Florian Vetsch, Christian Dinkel, Christine Weber

[Democratizing data to support the implementation of Canada's Wild Salmon Policy](#)

Katrina Connors, Stephanie J. Peacock, Eric Hertz, Bruno Carturan, Marc Porter, Katy Bryan, Rheanna Drennan, Leah Honka, Eileen Jones, Kathleen Belton

If you have a recent publication that you would like to add to an upcoming newsletter, please reach out to mdethloff@psmfc.org.

Highlights

CRITFC/OSU Coastal Oceanography Summer Tribal Internship

Closes: March 6th



**PAID TRIBAL INTERNSHIP
IN COASTAL OCEANOGRAPHY**

Hands-on research with tribal organization & university scientists

Open to tribal undergraduate students graduating
in Spring 2027 or later

- Conduct hands-on oceanography research
- Work with ocean instruments and datasets
- Be mentored by scientists at CRITFC and OSU

Are you a tribal college student interested in hands-on oceanography research? This paid summer internship offers the opportunity to work with ocean observing technologies and datasets, support tribal stewardship of coastal and estuarine ecosystems, and build research and professional skills through a mentored summer research program.

Apply here: [Career Center | Recruitment](#)

The Columbia River Inter-Tribal Fish Commission (CRITFC) and Oregon State University (OSU) are offering two paid summer undergraduate research internships in coastal oceanography. Interns will be funded by CRITFC's Coastal Margin Observation and Prediction (CMOP) program and will conduct research in the OSU Seascape Ecology Lab, led by Dr. Maria Kavanaugh. Interns will take part in the OSU College of Earth, Ocean, and Atmospheric Sciences (CEOAS) Summer Internship Program, a supportive learning environment that includes field trips, seminars, and social events. The internship runs from June 15 to August 14, 2026.

Students will conduct guided independent research in the Seascape Ecology Lab at OSU and travel to Astoria, Oregon, to work with CRITFC CMOP staff and participate in hands-on fieldwork in the Columbia River estuary. Interns will also travel to CRITFC's Portland office to learn about the mission, structure, and work of CRITFC and its member tribes, gaining insight into tribal fisheries management, treaty rights, and the role of science in supporting tribal stewardship of natural resources.

Program Benefits

Interns will receive travel support to and from Corvallis, on-campus housing and meal plan for the duration of the internship, and a salary of \$20 per hour for a 40-hour work week.

Eligibility and desired qualifications

Students pursuing an undergraduate degree at a two- or four-year college who have completed at least one year of their degree and are not graduating seniors are eligible to apply. Applicants must be U.S. citizens or permanent residents. Preference will be given to applicants who are enrolled members of a federally recognized tribe. Ideal candidates will demonstrate interest and enthusiasm for coastal and estuarine oceanography and ocean observing. Students with experience working with lab equipment, sensors, microscopes or plankton imaging systems, as well as those with experience conducting fieldwork, are encouraged to apply. Experience with, or willingness to learn, data analysis software is preferred.

California Fish Passage Forum Releases New StoryMap: Connecting People and Fish in Urban and Rural Watersheds



(Washington, DC) - The [California Fish Passage Forum](#) (CFPF) is excited to announce the release of a new interactive StoryMap, ***Restoration Across California: Connecting People and Fish in Urban and Rural Watersheds***. This StoryMap highlights two powerful, community-centered restoration efforts—one in the urban East San Francisco Bay and one in the rural Klamath River Basin. California's nearly 190,000 miles of waterway are essential to communities,

cultures, and anadromous species like salmon, steelhead, lamprey, and sturgeon. Yet road crossings, flood control infrastructure, diversions, and dams have fragmented these systems. This StoryMap showcases how local partnerships, creative engagement, and hands-on restoration are overcoming those barriers and reconnecting people and fish.

Two Diverse Restoration Projects:

Wildcat Creek | East San Francisco Bay

In the highly urbanized watershed of Wildcat Creek, The Watershed Project is transforming a fragmented creek into a community-centered nature corridor. Through participatory design, environmental education, and community science, residents of North Richmond—working alongside tribal partners, municipalities, and designers—are shaping restoration solutions that improve fish passage, create mini-parks, and strengthen neighborhood connections to nature. From multilingual interpretive signage and youth monitoring programs to innovative storytelling like *Kiyana and the Wildcat Creek*, this project shows how investing in arts, culture, and community voice can build lasting support for restoration.

Salmon & Mid-Klamath Rivers | Northern California

In rural northern California, the Salmon River Restoration Council and Mid Klamath Watershed Council demonstrate an “all-hands-on-deck” approach to fish passage in one of California’s most intact salmon strongholds. Youth crews manually improve seasonal fish passage at tributary mouths, monitor fish populations, and gain real-world experience as river stewards. In the wake of the historic removal of four Klamath River dams, young people in these rural communities are bearing witness to the return of salmon—building pride, healing, and a new generation of restoration professionals.

Tools, Resources, and Takeaways for Practitioners

The StoryMap highlights a suite of **practitioner-ready resources** that can be directly incorporated into project planning, implementation, and funding applications. Highlighted resources include

- The Passage Assessment Database (PAD) and rapid fish passage assessment tools
- Community-based restoration and stakeholder engagement guides
- Monitoring methods, including volunteer- and youth-led approaches
- Funding pathways through the California Fish Passage Forum and other NFHP partnerships.

Whether you work in dense urban neighborhoods or remote rural watersheds, these stories highlight the diversity of skills, partnerships, and creativity needed to make restoration possible.

[This StoryMap](#) was produced by the California Fish Passage Forum, with support from the National Fish Habitat Partnership and the Association of Fish and Wildlife Agencies, in partnership with The Watershed Project and the Salmon River Restoration Council.

The CFPF is one of 20 regional partnerships within the [National Fish Habitat Partnership \(NFHP\)](#) and brings together state, federal, tribal, academic, local, and nonprofit partners to address shared conservation challenges. The StoryMap launch comes as CFPF and its partners prepare to celebrate the 20th anniversary of the National Fish Habitat Partnership in 2026, marking two decades of nationwide collaboration to protect and restore fish habitats across the US.

 PNAMP.org

 pnamp@psmfc.org

 [PNAMP YouTube channel](#)



Copyright (C) 2026 PNAMP. All rights reserved.